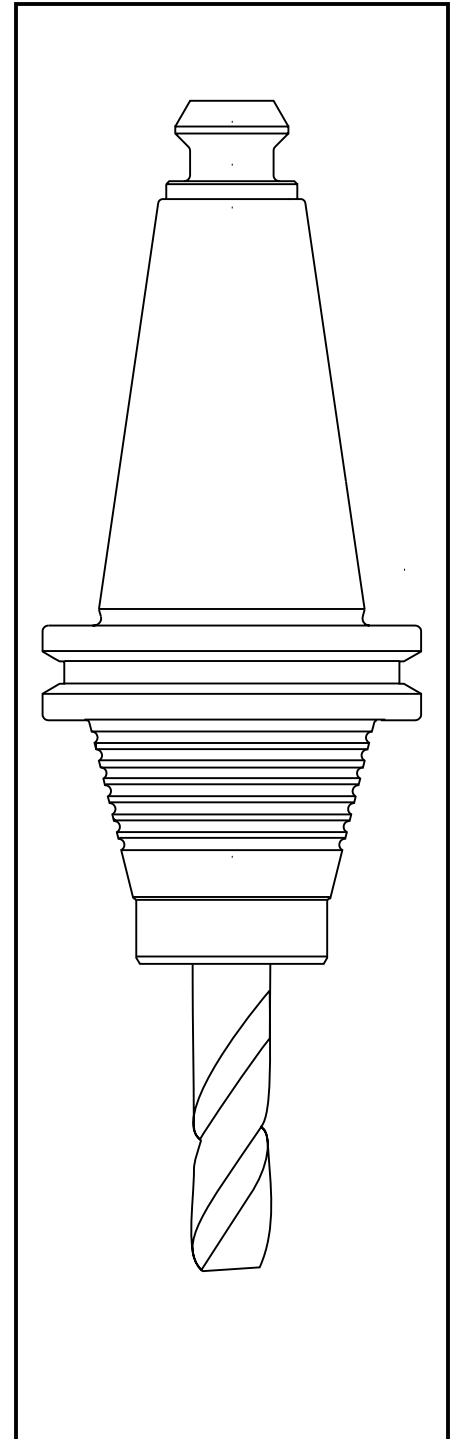
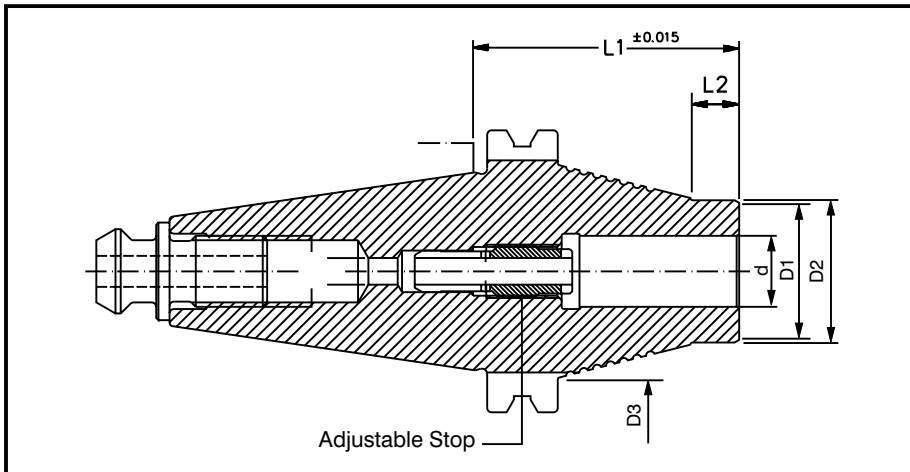


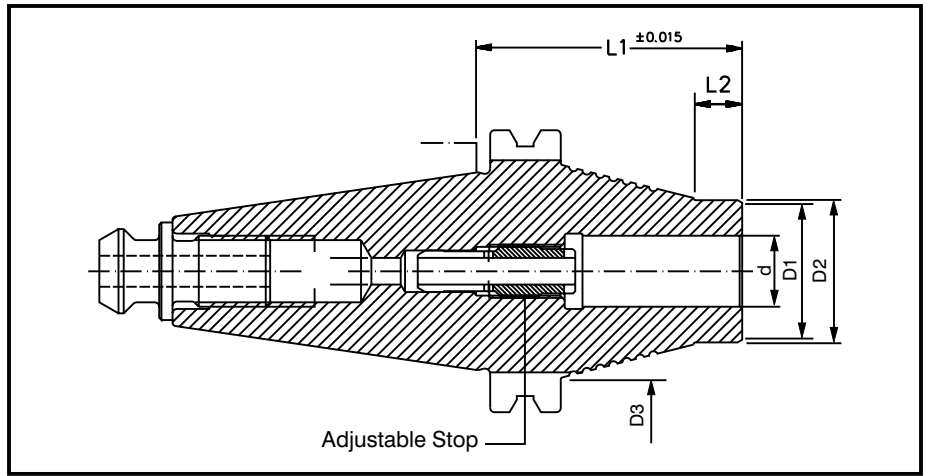
Selection Guide



CONTENTS

STANDARD CAT Inch Diameter	3
CATEPILLAR CAT - 30 STANDARD, 40 STANDARD, 50 STANDARD	
STANDARD CAT Metric Diameter	4
CATEPILLAR CAT - ANSI B5.5-CAT40 STANDARD, ANSI B5.5-CAT40 LONG	
STANDARD MAS-BT30 Inch Diameter	5
STANDARD - MAS-BT30 STANDARD, MAS-BT40 STANDARD, MAS-BT50 STANDARD	
STANDARD MAS-BT30 Metric Diameter.....	6
STANDARD - MAS-BT30 STANDARD, MAS-BT40 STANDARD, MAS-BT50 STANDARD	
STANDARD HSK-A Inch Diameter.....	7
HSK - A SERIES - 63A STANDARD, 100A STANDARD	
STANDARD LONG HSK-A Inch Diameter	8
HSK - A SERIES - 63A STANDARD LONG , 80A STANDARD LONG, 100A STANDARD LONG	
STANDARD HSK-A Metric Diameter	9
HSK - A SERIES - 63A STANDARD, 100A STANDARD	
STANDARD LONG HSK-A Metric Diameter	10
HSK - A SERIES - 63A STANDARD LONG , 100A STANDARD LONG	
STANDARD HSK-E Inch Diameter	11
HSK - E SERIES - 25E STANDARD, 32E STANDARD, 40E STANDARD, 50E STANDARD, 63E STANDARD	
STANDARD LONG HSK-E Inch Diameter	12
HSK - E SERIES - 50E STANDARD LONG	
STANDARD HSK-E Metric Diameter.....	13
HSK - E SERIES - 25E STANDARD, 32E STANDARD, 40E STANDARD	
STANDARD HSK-E Metric Diameter	14
HSK - E SERIES - 50E STANDARD, 63E STANDARD	
STANDARD LONG HSK-E Metric Diameter	15
HSK - E SERIES - 32E STANDARD LONG, 40E STANDARD LONG, 50E STANDARD LONG	
STANDARD LONG HSK-F Inch Diameter	16
HSK - F SERIES - 63F STANDARD, 63F STANDARD LONG	
STANDARD LONG HSK-F Metric Diameter	17
HSK - F SERIES - 63F STANDARD, 63F STANDARD LONG	
HSK Special Tool Holders Dimentional Form.....	18
HSK - SERIES	
CAT Special Tool Holders Dimentional Form.....	19
CAT/BT - SERIES	

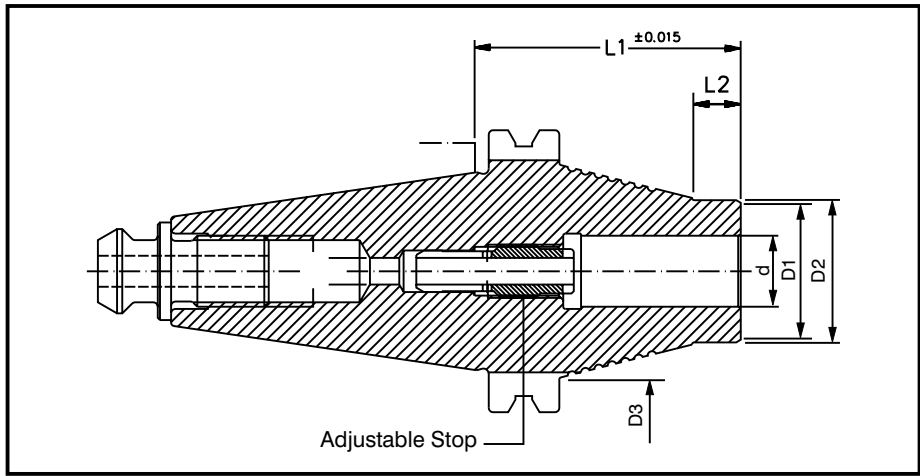
**STANDARD
CAT
Inch Diameter**



CATEPILLAR CAT	PART #	DIA.	L1	L2	d	D1	D2	D3
30 STANDARD	0830	3/16"	50	13	3/16"	22	24	24
	0831	1/4"	50	13	1/4"	24	27	27
	0832	5/16"	50	13	5/16"	26	31	31
	0833	3/8"	50	13	3/8"	28	31	31
	0834	1/2"	60	13	1/2"	32	31	31
	0835	5/8"	60	13	5/8"	36	31	31
40 STANDARD	0848	3/16"	50	11	3/16"	14	15	22
	0840	1/4"	50	11	1/4"	22	23	25
	0841	5/16"	50	11	5/16"	24	25	28
	0842	3/8"	50	11	3/8"	26	27	35
	0849	7/16"	50	11	7/16"	27	28	40
	0843	1/2"	50	11	1/2"	28	29	42
	0844	5/8"	60	11	5/8"	32	33	44
	0845	3/4"	60	11	3/4"	36	37	44
	0846	7/8"	60	11	7/8"	38	39	44
0847	1"	60	11	1"	41	42	44	
50 STANDARD	0869	3/16"	60	11	3/16"	14	15	22
	0860	1/4"	60	11	1/4"	22	23	26
	0861	5/16"	60	11	5/16"	24	25	30
	0862	3/8"	60	11	3/8"	26	27	35
	08690	7/16"	60	11	7/16"	27	28	40
	0863	1/2"	60	11	1/2"	28	29	45
	08691	9/16"	60	11	9/16"	30	31	50
	0864	5/8"	80	11	5/8"	32	33	55
	0865	3/4"	80	11	3/4"	36	37	59
	0866	7/8"	80	11	7/8"	38	39	62
	0867	1"	80	11	1"	41	42	64
0868	1-1/4"	90	11	1-1/4"	49	50	69	

All CAT Toolholders conform to AT3 or better specifications and meet G2.5 balance requirements.

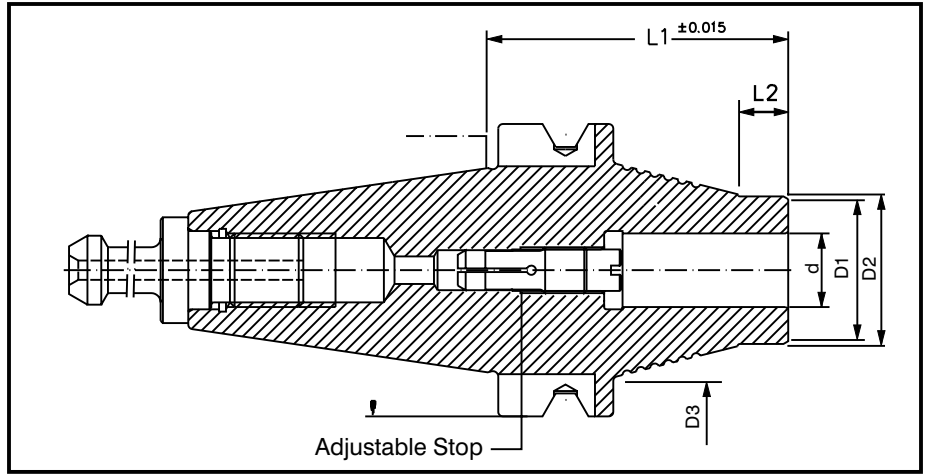
**STANDARD
CAT
Metric Diameter**



CATEPILLAR CAT	PART #	DIA.	L1	L2	d	D1	D2	D3
METRIC ANSI B5.5-CAT40 STANDARD	0100	6.0	50	11	6.0	22	23	25
	0101	8.0	50	11	8.0	24	25	28
	0102	10.0	50	11	10.0	26	27	35
	0103	12.0	50	11	12.0	28	29	42
	0104	14.0	50	11	14.0	30	31	44
	0105	16.0	60	11	16.0	32	33	44
	0106	18.0	60	11	18.0	34	35	44
	0107	20.0	60	11	20.0	36	37	44
ANSI B5.5-CAT40 LONG	0108	25.0	60	11	25.0	41	42	44
	16730	6.0	120	11	6.0	22	23	42
	16731	8.0	120	11	8.0	24	25	42
	16732	10.0	120	11	10.0	26	27	42
	16733	12.0	120	11	12.0	28	29	44
	16735	16.0	120	11	16.0	32	33	44
	16737	20.0	120	11	20.0	36	37	44
16738	25.0	120	11	25.0	41	42	44	

All CAT Toolholders conform to AT3 or better specifications and meet G2.5 balance requirements.

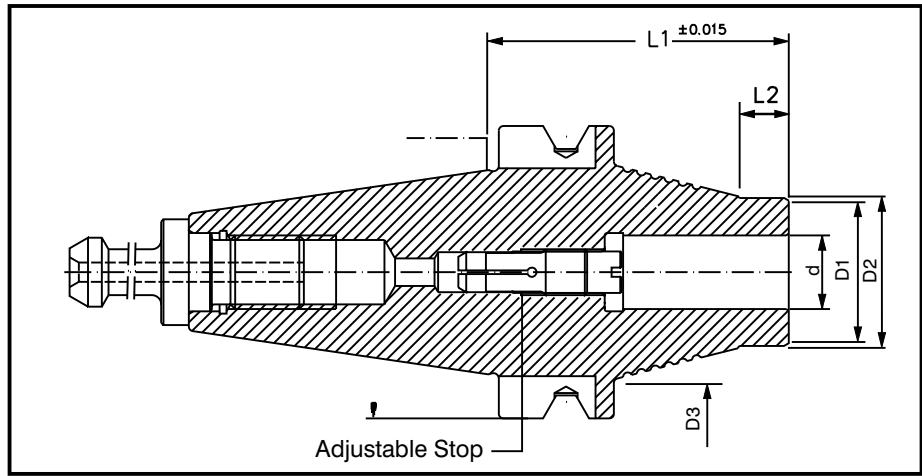
**STANDARD
MAS-BT30
Inch Diameter**



INCH	MAS-BT30	PART #	DIA.	L1	L2	d	D1	D2	D3
STANDARD	0780	1/4"	53	11	1/4"	22	23	25	
	0781	5/16"	53	11	5/16"	24	25	28	
	0782	3/8"	53	11	3/8"	26	27	35	
	0783	1/2"	53	11	1/2"	28	29	38	
	0785	5/8"	63	11	5/8"	32	33	38	
	0787	3/4"	63	11	3/4"	36	37	38	
	0788	1"	68	11	1"	41	42	42	
MAS-BT40 STANDARD	0808	1/8"	55	11	1/8"	7	10	20	
	0799	3/16"	55	11	3/16"	14	15	22	
	0800	1/4"	55	11	1/4"	22	23	25	
	0801	5/16"	55	11	5/16"	24	25	28	
	0802	3/8"	55	11	3/8"	26	27	35	
	0803	1/2"	55	11	1/2"	28	29	42	
	0804	5/8"	65	11	5/8"	32	33	48.5	
	0805	3/4"	65	11	3/4"	36	37	49.5	
	0806	7/8"	65	11	7/8"	38	39	49.5	
0807	1"	65	11	1"	41	42	49.5		
MAS-BT50 STANDARD	0820	1/4"	80	11	1/4"	22	23	26	
	0821	5/16"	80	11	5/16"	24	25	30	
	0822	3/8"	80	11	3/8"	26	27	35	
	0823	1/2"	80	11	1/2"	28	29	45	
	0824	5/8"	100	11	5/8"	32	33	55	
	0825	3/4"	100	11	3/4"	36	37	59	
	0826	7/8"	100	11	7/8"	38	39	62	
	0827	1"	100	11	1"	41	42	64	
	0828	1-1/4"	110	11	1-1/4"	49	50	76	

All HSK Toolholders conform to DIN69893 or better specifications and meet G2.5 balance requirements.

**STANDARD
MAS-BT30
Metric Diameter**

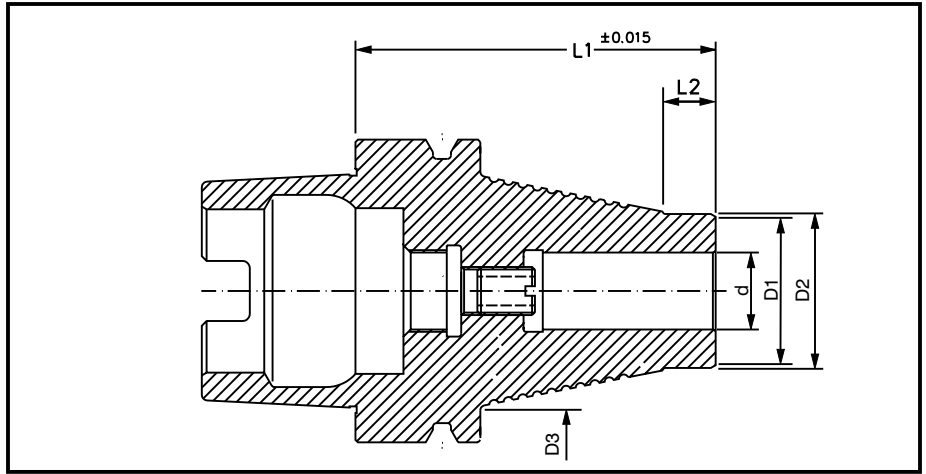


METRIC

MAS-BT30	PART #	DIA.	L1	L2	d	D1	D2	D3
STANDARD	0040	6.0	50	11	6.0	22	23	25
	0041	8.0	50	11	8.0	24	25	28
	0042	10.0	50	11	10.0	26	27	35
	0043	12.0	50	11	12.0	28	29	38
	0045	16.0	60	11	16.0	32	33	38
	0047	20.0	60	11	20.0	36	37	40
	0048	25.0	65	11	25.0	41	42	42
MAS-BT40 STANDARD	00691	3.0	55	11	3.0	10	11	20
	0069	4.0	55	11	4.0	12	13	21
	00692	5.0	55	11	5.0	14	15	22
	0060	6.0	55	11	6.0	22	23	25
	0061	8.0	55	11	8.0	24	25	28
	0062	10.0	55	11	10.0	26	27	35
	0063	12.0	55	11	12.0	28	29	42
	0064	14.0	55	11	14.0	30	31	45
	0065	16.0	65	11	16.0	32	33	48.5
	0067	20.0	65	11	20.0	36	37	49.5
	0068	25.0	65	11	25.0	41	42	49.5
MAS-BT40 LONG	169910	3.0	120	11	3.0	10	11	36
	169911	4.0	120	11	4.0	12	13	38
	169912	5.0	120	11	5.0	14	15	38
	16990	6.0	120	11	6.0	22	23	42
	16991	8.0	120	11	8.0	24	25	42
	16992	10.0	120	11	10.0	26	27	42
	16993	12.0	120	11	12.0	28	29	45
	16994	14.0	120	11	14.0	30	31	48
	16995	16.0	120	11	16.0	32	33	48
	16996	18.0	120	11	18.0	34	35	49
	16997	20.0	120	11	20.0	36	37	49
	16998	25.0	120	11	25.0	41	42	49

All HSK Toolholders conform to DIN69893
or better specifications and meet
G2.5 balance requirements.

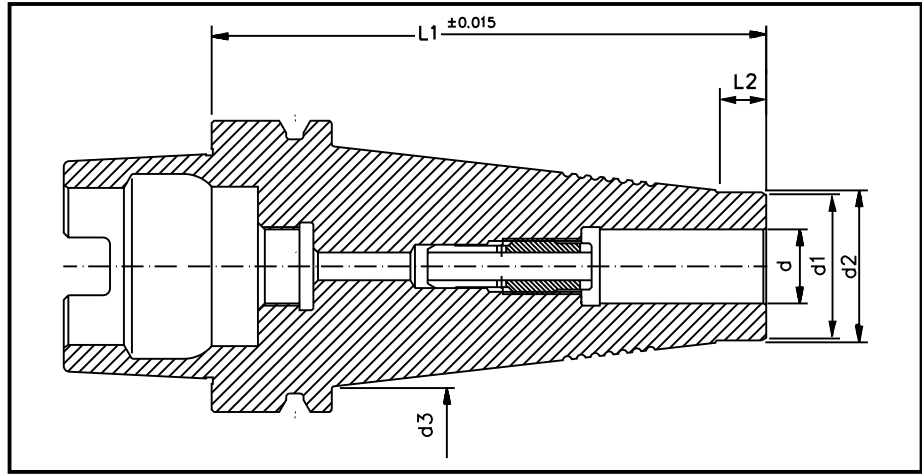
**STANDARD
HSK - A
Inch Diameter**



INCH	HSK - A SERIES	PART #	DIA.	L1	L2	d	d1	d2	d3
63A STANDARD		0910	1/4"	65	11	1/4"	22	23	26
		0911	5/16"	70	11	5/16"	24	25	28
		0912	3/8"	70	11	3/8"	26	27	35
		0913	1/2"	70	11	1/2"	28	29	42
		0914	5/8"	75	11	5/8"	32	33	48
		0915	3/4"	80	11	3/4"	36	37	52
		0916	7/8"	80	11	7/8"	38	39	52
		0917	1"	85	11	1"	41	42	52
100A STANDARD		26560	1/4"	90	11	1/4"	22	23	34
		26561	5/16"	90	11	5/16"	24	25	38
		26562	3/8"	90	11	3/8"	26	27	42
		26563	1/2"	90	11	1/2"	28	29	46
		26564	5/8"	90	11	5/8"	32	33	52
		26565	3/4"	90	11	3/4"	36	37	60
		26566	7/8"	90	11	7/8"	38	39	60
		26567	1"	95	11	1"	41	42	65
		26568	1-1/4"	110	11	1-1/4"	49	50	75

All HSK Toolholders conform to DIN69893 or better specifications and meet G2.5 balance requirements.

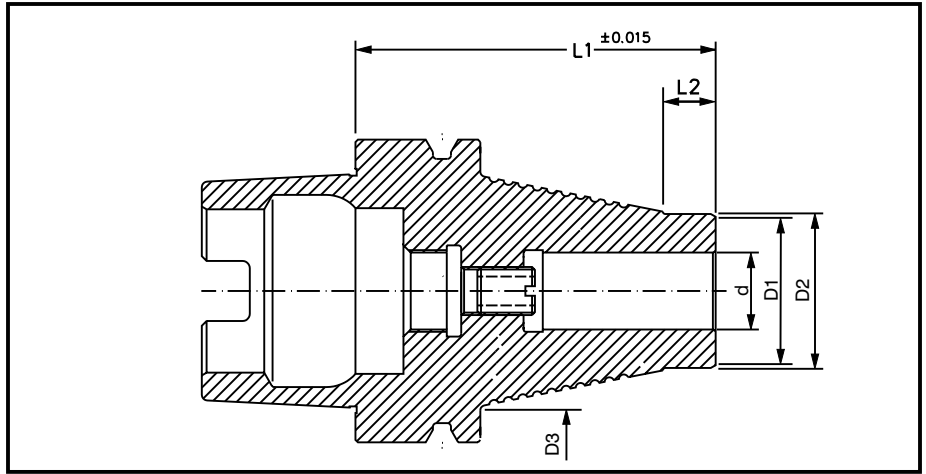
**STANDARD
LONG
HSK - A
Inch Diameter**



INCH	HSK - A SERIES	PART #	DIA.	L1	L2	d	d1	d2	d3
63A STANDARD LONG		26530	1/4"	120	11	1/4"	22	23	42
		26531	5/16"	120	11	5/16"	24	25	42
		26532	3/8"	120	11	3/8"	26	27	42
		26533	1/2"	120	11	1/2"	28	29	45
		26534	5/8"	120	11	5/8"	32	33	50
		26535	3/4"	120	11	3/4"	36	37	50
		26536	7/8"	120	11	7/8"	38	39	50
		26537	1"	120	11	1"	41	42	50
100A STANDARD LONG		26570	1/4"	140	11	1/4"	22	23	44
		26571	5/16"	140	11	5/16"	24	25	48
		26572	3/8"	140	11	3/8"	26	27	52
		26573	1/2"	140	11	1/2"	28	29	56
		26574	5/8"	140	11	5/8"	32	33	64
		26575	3/4"	140	11	3/4"	36	37	68
		26576	7/8"	140	11	7/8"	38	39	68
		26577	1"	140	11	1"	41	42	75
		26578	1-1/4"	140	11	1-1/4"	49	50	80

All HSK Toolholders conform to DIN69893
or better specifications and meet
G2.5 balance requirements.

**STANDARD
HSK - A
Metric Diameter**

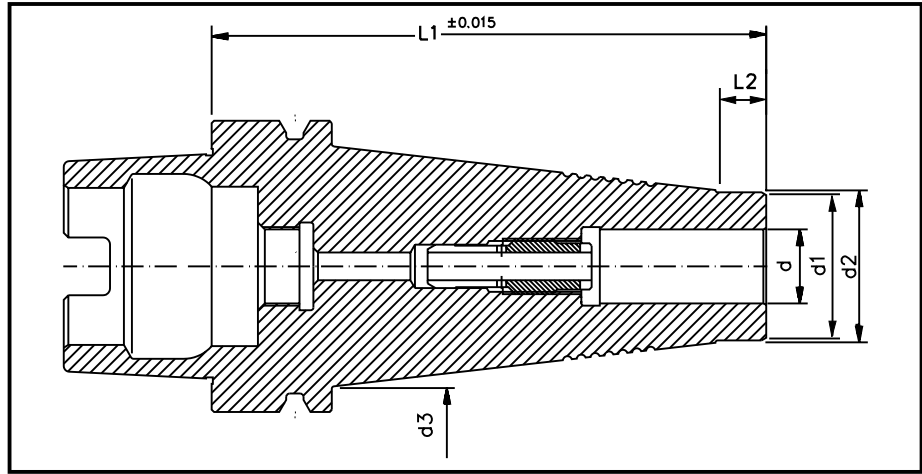


METRIC

HSK - A SERIES	PART #	DIA.	L1	L2	d	d1	d2	d3
63A STANDARD	01791	3.0	65	11	3.0	10	11	22
	01792	4.0	65	11	4.0	12	13	23
	01793	5.0	65	11	5.0	14	15	24
	0170	6.0	65	11	6.0	22	23	26
	0171	8.0	70	11	8.0	24	25	28
	0172	10.0	70	11	10.0	26	27	35
	0173	12.0	70	11	12.0	28	29	42
	01794	13.0	70	11	13.0	29	30	43
	0174	14.0	70	11	14.0	30	31	44
	0175	16.0	75	11	16.0	32	33	48
	0176	18.0	75	11	18.0	34	35	50
	0177	20.0	80	11	20.0	36	37	52
	0178	25.0	85	11	25.0	41	42	52
	0179	32.0	100	11	32.0	49	50	52
100A STANDARD	0500	6.0	90	11	6.0	22	23	34
	0501	8.0	90	11	8.0	24	25	38
	0502	10.0	90	11	10.0	26	27	42
	0503	12.0	90	11	12.0	28	29	46
	0504	14.0	90	11	14.0	30	31	48
	0505	16.0	90	11	16.0	32	33	52
	0506	18.0	90	11	18.0	34	35	55
	0507	20.0	90	11	20.0	36	37	60
	0508	25.0	95	11	25.0	41	42	65
	0509	32.0	110	11	32.0	49	50	75

All HSK Toolholders conform to DIN69893
or better specifications and meet
G2.5 balance requirements.

**STANDARD
LONG
HSK - A
Metric Diameter**

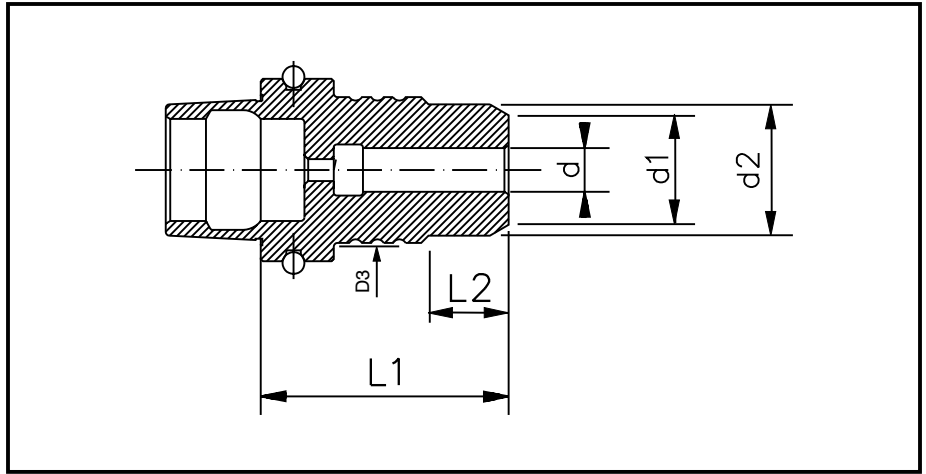


METRIC

HSK - A SERIES	PART #	DIA.	L1	L2	d	d1	d2	d3
63A STANDARD LONG	261810	3.0	120	11	3.0	10	11	38
	261811	4.0	120	11	4.0	12	13	38
	26180	6.0	120	11	6.0	22	23	42
	26181	8.0	120	11	8.0	24	25	42
	26182	10.0	120	11	10.0	26	27	42
	26183	12.0	120	11	12.0	28	29	45
	26189	12.0	120	11	12.0	16	17	21.4
	26184	14.0	120	11	14.0	30	31	48
	26185	16.0	120	11	16.0	32	33	50
	26187	20.0	120	11	20.0	36	37	50
	26188	25.0	120	11	25.0	41	42	50
100A STANDARD LONG	264511	3.0	140	11	3.0	10	11	42
	26458	4.0	140	11	4.0	12	13	42
	26450	6.0	140	11	6.0	22	23	44
	26451	8.0	140	11	8.0	24	25	48
	26452	10.0	140	11	10.0	26	27	52
	26453	12.0	140	11	12.0	28	29	56
	26454	14.0	140	11	14.0	30	31	60
	26455	16.0	140	11	16.0	32	33	64
	26456	18.0	140	11	18.0	34	35	66
	26457	20.0	140	11	20.0	36	37	68
	26459	25.0	140	11	25.0	41	42	75
264510	32.0	140	11	32.0	49	50	80	
100A STANDARD LONG	26460	6.0	220	11	6.0	19	20	50
	26461	8.0	220	11	8.0	21	22	52
	26462	10.0	220	11	10.0	23	24	54
	26463	12.0	220	11	12.0	25	26	56
	26464	14.0	220	11	14.0	27	28	60
	26465	16.0	220	11	16.0	29	30	66
	26466	18.0	220	11	18.0	31	32	70
	26467	20.0	220	11	20.0	33	34	74
	26468	25.0	220	11	25.0	41	42	78
	26469	32.0	220	11	32.0	49	50	82

All HSK Toolholders conform to DIN69893 or better specifications and meet G2.5 balance requirements.

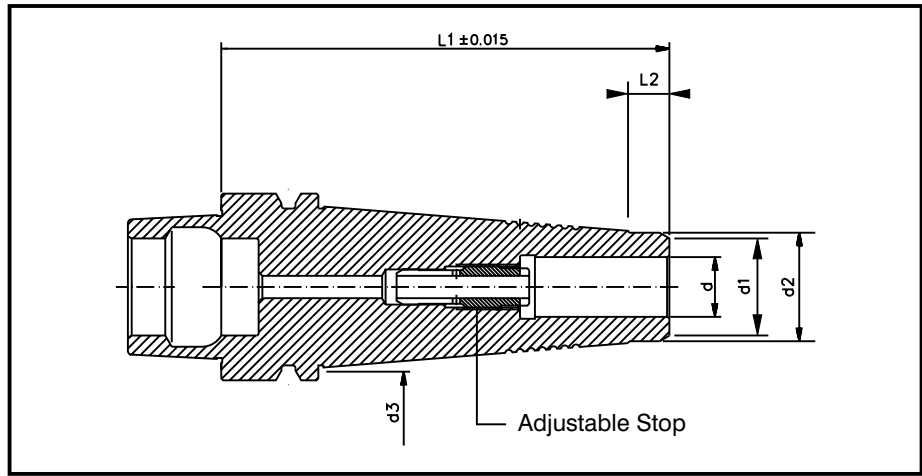
**STANDARD
HSK - E
Inch Diameter**



INCH	HSK - E SERIES	PART #	DIA.	L1	L2	d	d1	d2	d3
	25E STANDARD	26490	1/8"	35.0	9	1/8"	7	10	20
		26491	3/16"	35.0	14	3/16"	14	20	20
		26492	1/4"	35.0	14	1/4"	19	20	20
		26493	5/16"	35.0	14	5/16"	20	20	20
		26494	3/8"	35.0	14	3/8"	22	20	20
	32E STANDARD	26581	3/16"	45.0	11	3/16"	14	15	19
		26582	1/4"	45.0	11	1/4"	19	20	21
		26583	5/16"	45.0	11	5/16"	21	22	23
		26584	3/8"	45.0	11	3/8"	23	24	25
		26585	1/2"	45.0	11	1/2"	25	26	26
	40E STANDARD	26511	1/4"	51.0	11	1/4"	19	20	26
		26512	5/16"	56.0	11	5/16"	21	22	28
		26513	3/8"	56.0	11	3/8"	23	24	33
		26514	1/2"	56.0	11	1/2"	25	26	33
		26515	5/8"	59.0	11	5/8"	29	30	33
	50E STANDARD	26230	1/4"	55.0	11	1/4"	22	23	26
		26231	5/16"	60.0	11	5/16"	24	25	28
		26232	3/8"	60.0	11	3/8"	26	27	35
		26233	1/2"	60.0	11	1/2"	28	29	41
		26235	5/8"	65.0	11	5/8"	32	33	41
		26237	3/4"	70.0	11	3/4"	36	37	41
	63E STANDARD	27040	1/4"	65.0	11	1/4"	22	23	26
		27041	5/16"	70.0	11	5/16"	24	25	28
		27042	3/8"	70.0	11	3/8"	26	27	35
		27043	1/2"	70.0	11	1/2"	28	29	42
		27044	5/8"	75.0	11	5/8"	32	33	48
		27045	3/4"	80.0	11	3/4"	36	37	52
		27046	7/8"	80.0	11	7/8"	38	39	52
		27047	1"	85.0	11	1"	41	42	52
		27048	1-1/4"	100.0	11	1-1/4"	49	50	52

All HSK Toolholders conform to DIN69893
or better specifications and meet
G2.5 balance requirements.

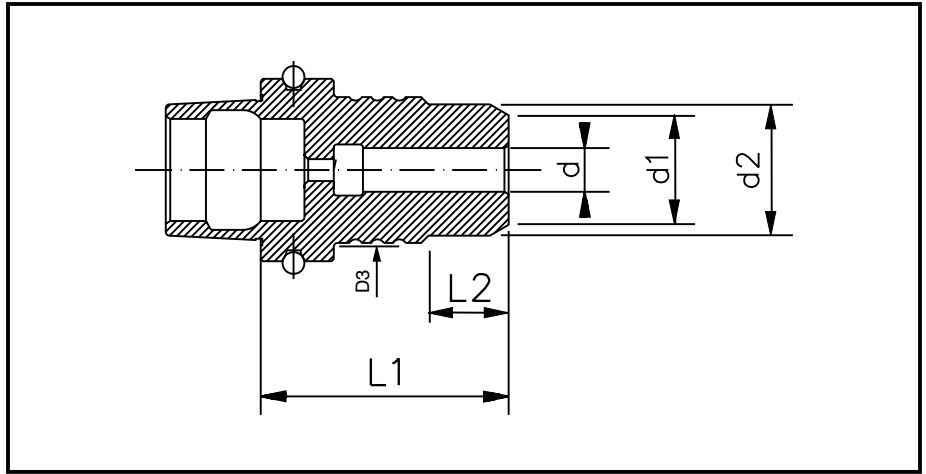
**STANDARD
LONG
HSK - E
Inch Diameter**



INCH	HSK - E SERIES	PART #	DIA.	L1	L2	d	d1	d2	d3
	50E STANDARD LONG	26520	1/4"	120	11	1/4"	19	20	38
		26521	5/16"	120	11	5/16"	21	22	40
		26522	3/8"	120	11	3/8"	23	24	40
		26523	1/2"	120	11	1/2"	25	26	40
		26525	5/8"	120	11	5/8"	29	30	42
		26527	3/4"	120	11	3/4"	33	34	42

All HSK Toolholders conform to DIN69893
or better specifications and meet
G2.5 balance requirements.

**STANDARD
HSK - E
Metric Diameter**

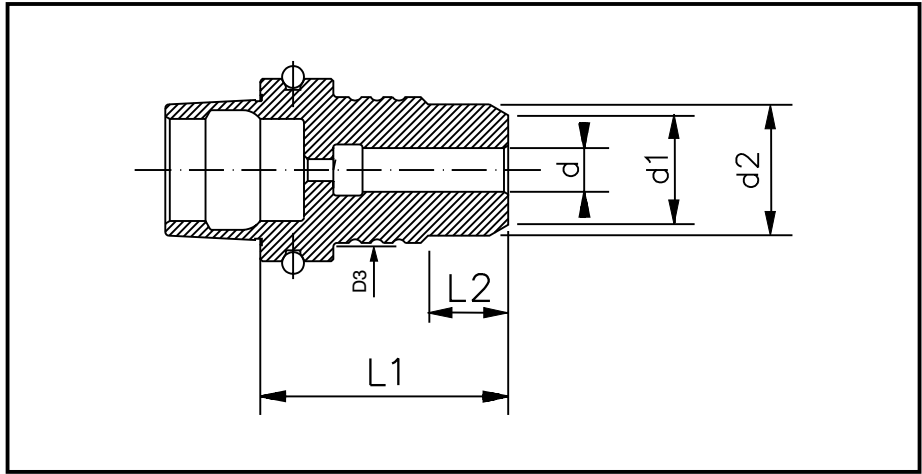


METRIC

HSK - E SERIES	PART #	DIA.	L1	L2	d	d1	d2	d3
25E STANDARD	0139	3	35	14	3	10	20	20
	01391	3	56	14	3	10	20	20
	0130	4	35	14	4	12	20	20
	0131	5	35	14	5	14	20	20
	0132	6	35	14	6	19	20	20
	0136	6	56	14	6	19	20	20
	0135	7	35	14	7	19	20	20
	0133	8	35	14	8	20	20	20
	0134	10	35	14	10	22	20	20
	0137	10	56	35	10	22	20	20
	0138	12	56	34	12	24	20	20
	01392	12	35	13	12	24	20	20
32E STANDARD	26256	3	45	11	3	10	11	14
	26250	4	46	11	4	12	13	16
	26251	5	45	11	5	14	15	19
	26252	6	45	11	6	19	20	21
	26253	8	45	11	8	21	22	23
	26254	10	45	11	10	23	24	25
	26255	12	45	11	12	25	26	26
40E STANDARD	26246	3	51	11	3	10	11	21
	26240	4	51	11	4	12	13	23
	26241	5	51	11	5	14	15	25
	26242	6	51	11	6	19	20	26
	26243	8	56	11	8	21	22	28
	26244	10	56	11	10	23	24	33
	26245	12	56	11	12	25	26	33
	26247	16	59	11	16	29	30	33
	26248	20	64	11	20	32	33	33

All HSK Toolholders conform to DIN69893
or better specifications and meet
G2.5 balance requirements.

**STANDARD
HSK - E
Metric Diameter**

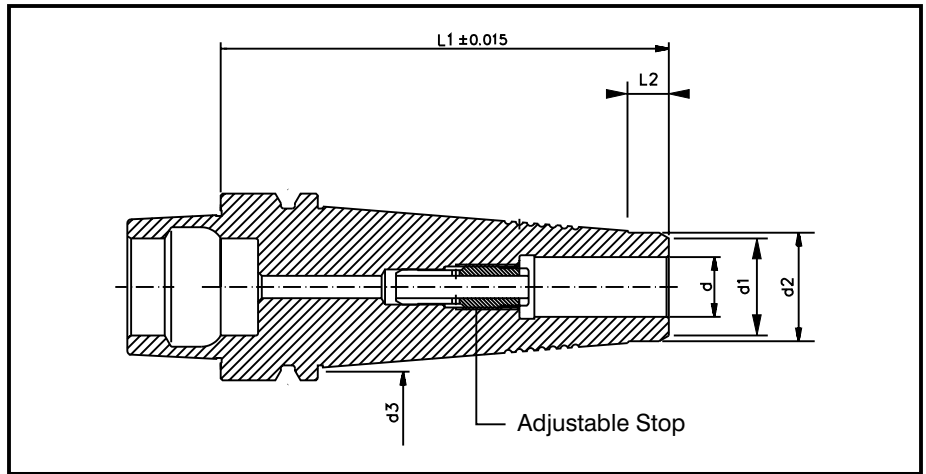


METRIC

HSK - E SERIES	PART #	DIA.	L1	L2	d	d1	d2	d3
50E STANDARD	262010	3	55	11	3	10	11	20
	262011	4	55	11	4	12	13	23
	26208	5	55	11	5	14	15	24
	26200	6	55	11	6	22	23	26
	26208	7	60	11	7	22	23	28
	26201	8	60	11	8	24	25	28
	26202	10	60	11	10	26	27	35
	26203	12	60	11	12	28	29	41
	26204	14	60	11	14	30	31	41
	26205	16	65	11	16	32	33	41
	26207	20	70	11	20	36	37	41
63E STANDARD	26300	6	65	11	6	19	20	26
	26301	8	70	11	8	21	22	28
	26302	10	70	11	10	23	24	35
	26303	12	70	11	12	25	26	42
	26304	16	75	11	16	32	33	48
	26305	20	80	11	20	36	37	52
	26306	25	85	11	25	41	42	52
	26307	32	100	11	32	49	50	52

All HSK Toolholders conform to DIN69893
or better specifications and meet
G2.5 balance requirements.

**STANDARD
LONG
HSK - E
Metric Diameter**

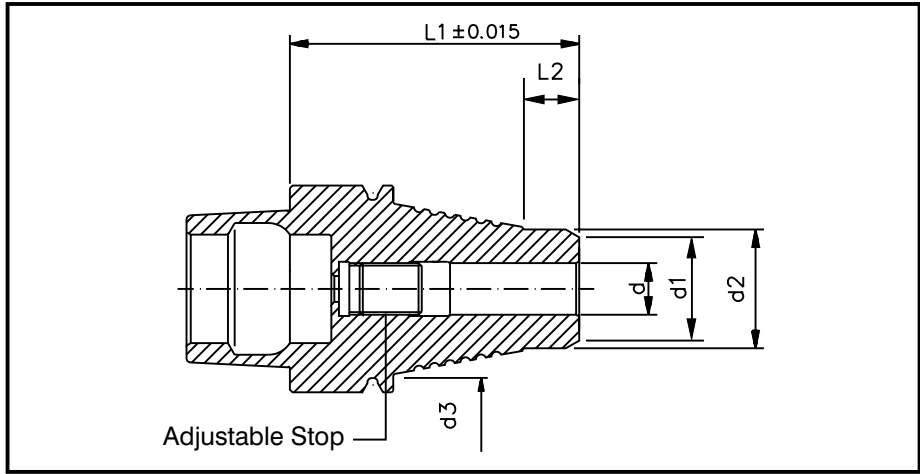


METRIC

HSK - E SERIES	PART #	DIA.	L1	L2	d	d1	d2	d3
32E STANDARD LONG	26554	3	100	11	3	10	11	26
	26555	4	100	11	4	12	13	26
	26556	5	100	11	5	14	15	26
	26550	6	100	11	6	12	13	26
	26551	8	100	11	8	16	17	26
	26552	10	100	11	10	20	21	26
	26553	12	100	11	12	22	23	26
40E STANDARD LONG	262416	3	100	11	3	10	11	33
	262417	4	100	11	4	12	13	33
	262418	5	100	11	5	14	15	33
	262410	6	100	11	6	19	20	33
	262411	8	100	11	8	21	22	33
	262412	10	100	11	10	23	24	33
	262413	12	100	11	12	25	26	33
	262414	14	100	11	14	27	28	33
	262415	16	100	11	16	29	30	33
50E STANDARD LONG	263110	3	120	11	3	10	11	36
	263111	4	120	11	4	12	13	36
	26318	5	120	11	5	14	15	38
	26310	6	120	11	6	19	20	38
	26319	7	120	11	7	19	20	38
	26311	8	120	11	8	21	22	40
	26312	10	120	11	10	23	24	40
	26313	12	120	11	12	25	26	40
	26314	14	120	11	14	27	28	42
	26315	16	120	11	16	29	30	42
	26316	18	120	11	18	31	32	42
	26317	20	120	11	20	33	34	42
50E STANDARD LONG	26720	6	126	11	6	12	13	38
	26721	8	126	11	8	16	17	40
	26722	10	126	11	10	20	21	40
	26723	12	126	11	12	25	26	40
	26724	14	126	11	14	27	28	42
	26725	16	126	11	16	29	30	42

All HSK Toolholders conform to DIN69893 or better specifications and meet G2.5 balance requirements.

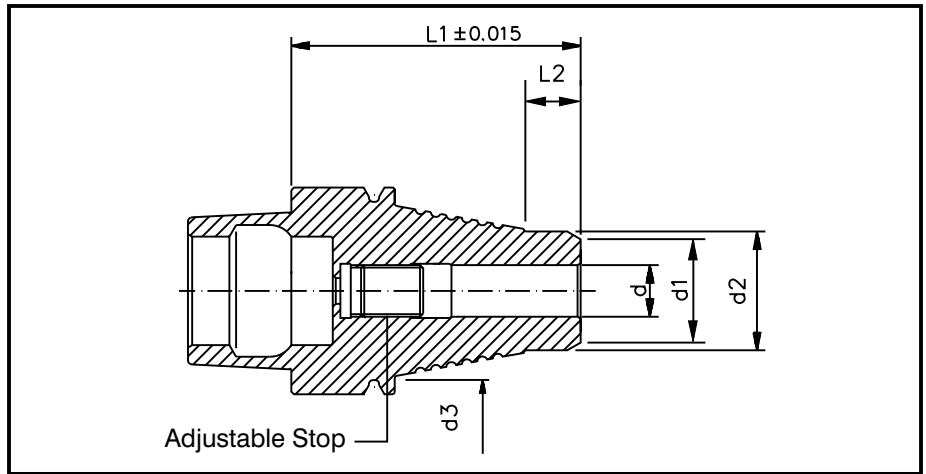
**STANDARD
HSK - F
Inch Diameter**



INCH	HSK - F SERIES	PART #	DIA.	L1	L2	d	d1	d2	d3
63F STANDARD		26170	1/4"	65	11	1/4"	22	23	26
		26171	5/16"	70	11	5/16"	24	25	28
		26172	3/8"	70	11	3/8"	26	27	35
		26173	1/2"	70	11	1/2"	28	29	42
		26174	5/8"	75	11	5/8"	32	33	48
		26175	3/4"	80	11	3/4"	36	37	52
		26176	7/8"	80	11	7/8"	38	39	52
		26177	1"	85	11	1"	41	42	52
63F STANDARD LONG		27120	1/4"	126	11	1/4"	12	13	30
		27121	5/16"	126	11	5/16"	16	17	34
		27122	3/8"	126	11	3/8"	20	21	38
		27123	1/2"	126	11	1/2"	25	26	42
		27124	5/8"	126	11	5/8"	29	30	52

All HSK Toolholders conform to DIN69893
or better specifications and meet
G2.5 balance requirements.

**STANDARD
HSK - F
Metric Diameter**



METRIC

HSK - F SERIES	PART #	DIA.	L1	L2	d	d1	d2	d3
63F STANDARD	26330	6	65	11	6	22	23	26
	26331	8	70	11	8	24	25	28
	26332	10	70	11	10	26	27	35
	26333	12	70	11	12	28	29	42
	26334	16	75	11	16	32	33	48
	26335	20	80	11	20	36	37	52
	26336	25	85	11	25	41	42	52
63F STANDARD LONG	26440	6	120	11	6	22	23	42
	26441	8	120	11	8	24	25	42
	26442	10	120	11	10	26	27	42
	26443	12	120	11	12	28	29	45
	26445	16	120	11	16	32	33	52
	26447	20	120	11	20	36	37	52
	26449	25	120	11	25	41	42	52

All HSK Toolholders conform to DIN69893
or better specifications and meet
G2.5 balance requirements.

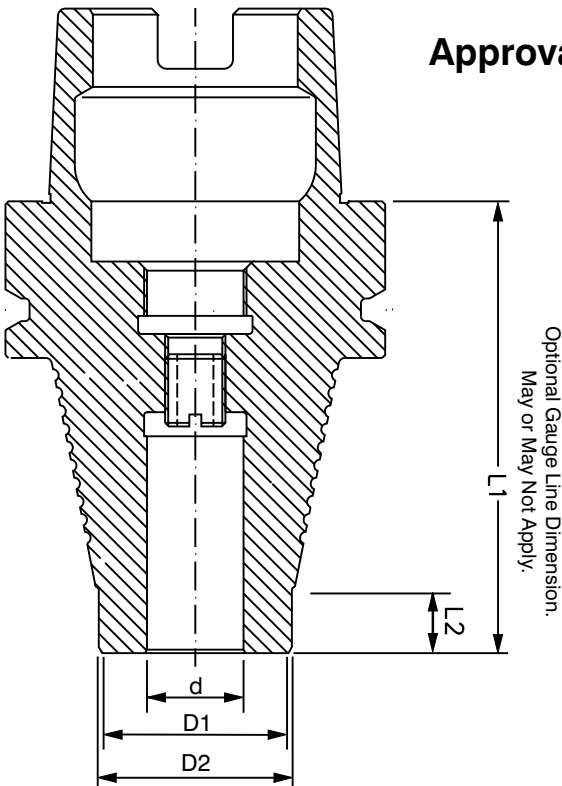
Special Tool Holders Dimensional Form

Customers Name _____

Customers Phone _____

Customers PO# _____

Approval Signature _____



**Circle Taper
Configuration**

**Fill In Desired
Dimensions**

HSK 25E

HSK 32E

HSK 40E

HSK 50E

HSK 63A

HSK 63E

HSK 63F

HSK 80A

HSK 100A

OTHER _____

L1 = _____

Optional Gauge Line Dimension

L2 = _____

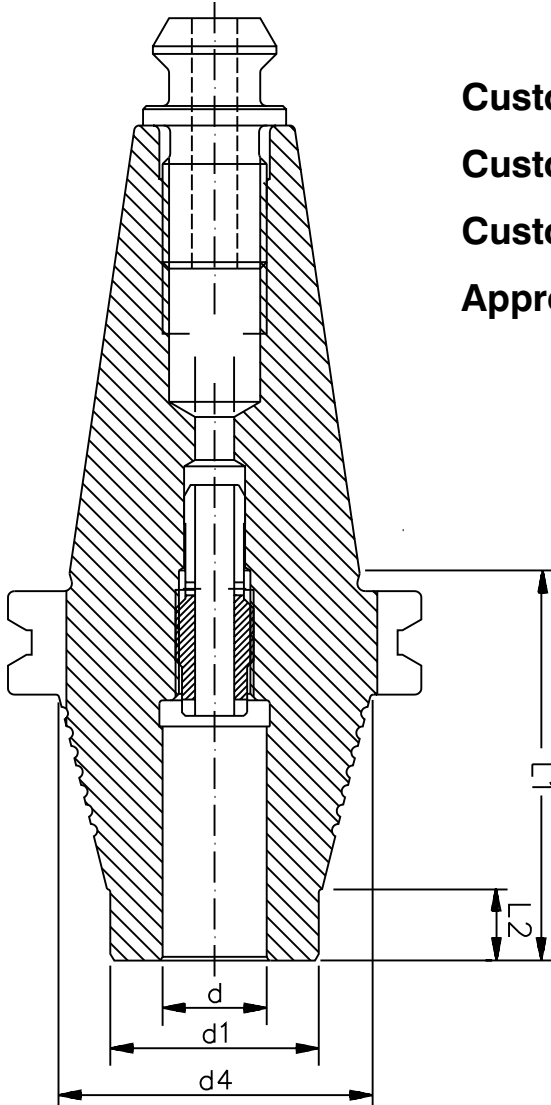
D = _____

D1 = _____

D4 = _____

Additional Information

Special Tool Holders Dimensional Form



Optional Gauge Line Dimension.
May or May Not Apply.

Customers Name _____

Customers Phone _____

Customers PO# _____

Approval Signature _____

Circle Taper Configuration

Fill In Desired Dimensions

CAT 40

L1 = _____

CAT 50

Optional Gauge Line Dimension

BT 30

L2 = _____

BT 40

D = _____

BT 50

D1 = _____

OTHER _____

D4 = _____

Additional Information
